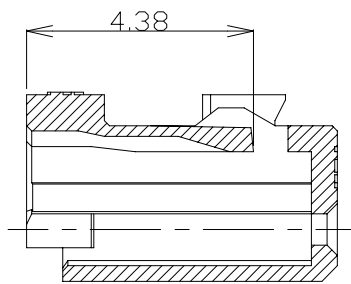
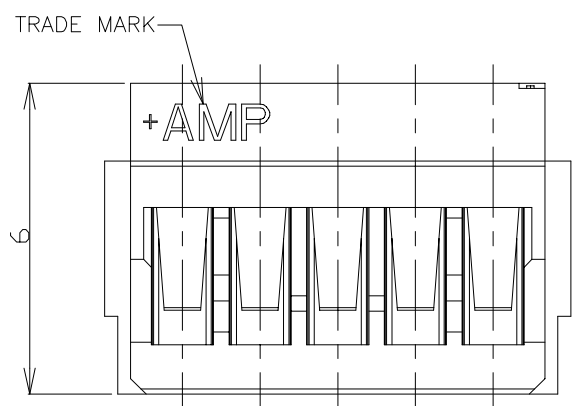
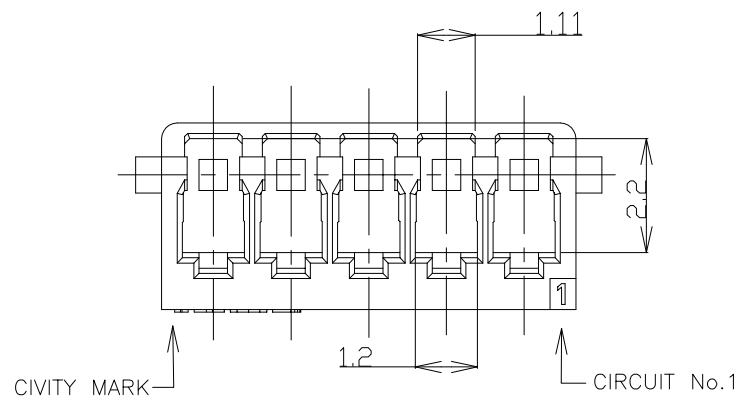
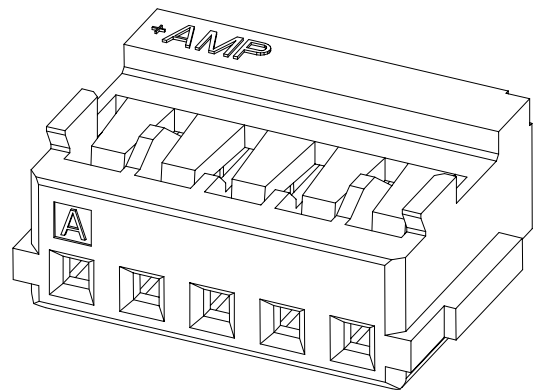
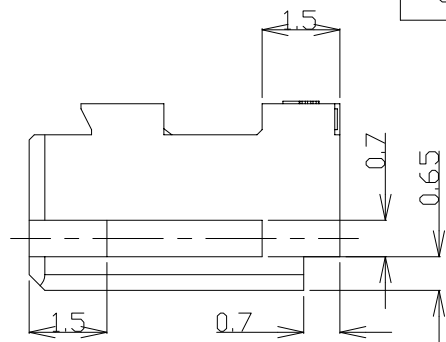
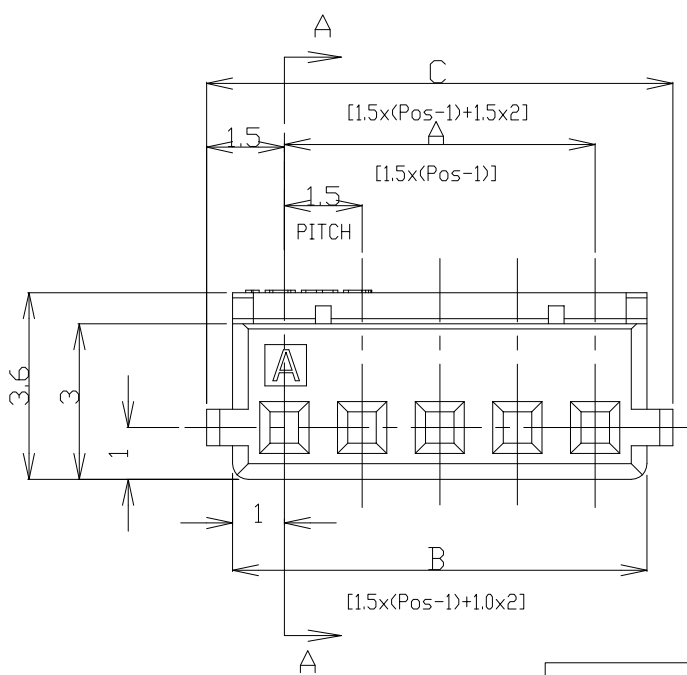


THIS DRAWING IS UNPUBLISHED. RELEASED FOR PUBLICATION
 © COPYRIGHT - By - ALL RIGHTS RESERVED.

LOC	DIST	REVISIONS			
P	LTR	DESCRIPTION	DATE	DWN	APVD
ES	00	D	REVISED ECR-16-005069	07APR2016	T.Q W.H



SECTION A-A



Pos	Blue	White				
0.30	31.5	30.5				
0.29	30.0	29.0				
0.27	28.5	27.5				
0.26	27.0	26.0				
0.24	25.5	24.5				
0.23	24.0	23.0				
0.21	22.5	21.5				
0.20	21.0	20.0				
0.19	19.5	18.5				
0.17	18.0	17.0				
0.16	16.5	15.5				
0.14	15.0	14.0				
0.13	13.5	12.5				
0.13	12.0	11.0				
0.10	10.5	9.5				
0.09	9.0	8.0				
0.07	7.5	6.5				
0.06	6.0	5.0				
0.04	4.5	3.5				
WEIGHT (g)	C	B	A	Pos	BLUE	WHITE
					P/N	

NOTES:
 1. APPLICABLE WIRE SIZE: AWG#24~#30(0.22mm²~0.05mm²).
 INSULATION DIAMETER: 0.7mm~1.03mm.
 2. USE WITH RECEPTACLE CONTACT P/N
 AWG#24~#28: 353907-1, 353918-1(L/P)

GENERAL TOLERANCE

10 ≥	±0.2
30 ≥ > 10	±0.25
100 ≥ > 30	±0.3
ANGLES: ±3°	

THIS DRAWING IS A CONTROLLED DOCUMENT.

DIMENSIONS:	TOLERANCES UNLESS OTHERWISE SPECIFIED:
mm	0 PLC ±-
	1 PLC ±-
	2 PLC ±-
	3 PLC ±-
	4 PLC ±-
	ANGLES ±-
MATERIAL	FINISH
66NYLON	
UL94 V-0	

WIRE RANGE		INSULATION DIA	
DWN H.HOSHINO 26.APR.'97		CHK J.TANIGAWA 26.APR.'97	
APVD S.KUBONOHI 10.MAR.'99		NAME	
PRODUCT SPEC		AMP MINI COMMON TERMINATED (CT)	
APPLICATION SPEC		CONNECTOR 1.5mm PITCH	
108-60025		HOUSING, CRIMP TYPE	
SIZE	CAGE CODE	DRAWING NO	RESTRICTED TO
A3	00779	C=353908	
WEIGHT		SCALE	SHEET
CUSTOMER DRAWING		NON	1 of 2
		REV	D

4

3

2

1

THIS DRAWING IS UNPUBLISHED.

RELEASED FOR PUBLICATION

LOC

DIST

REVISIONS

© COPYRIGHT - By -

ALL RIGHTS RESERVED.

ES

00

P

LTR

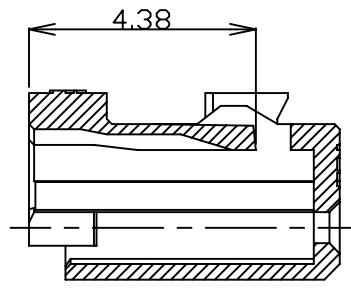
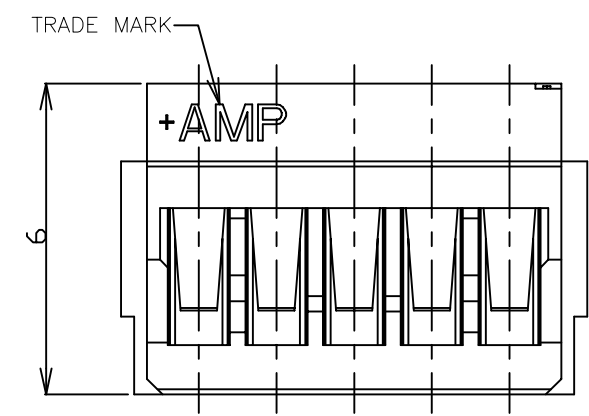
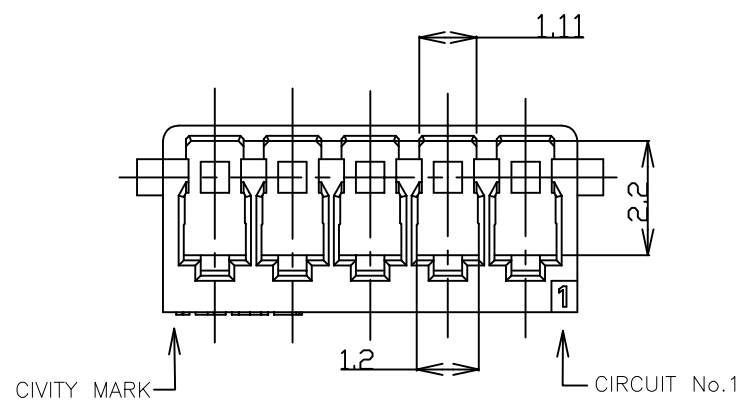
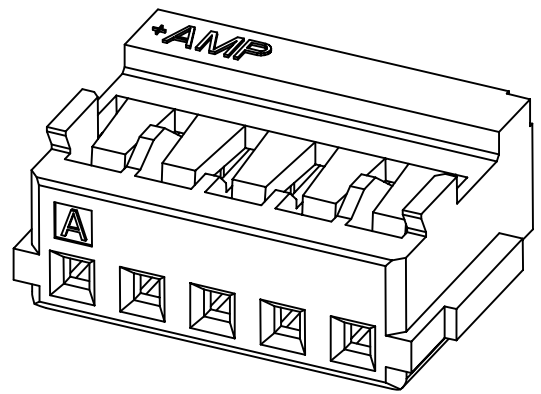
DESCRIPTION

DATE

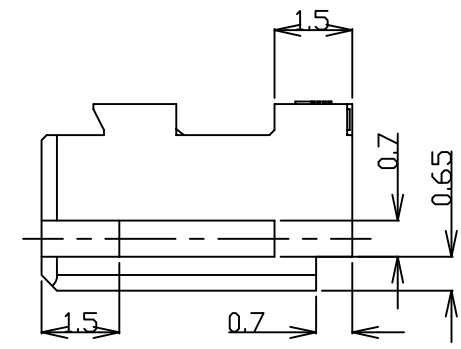
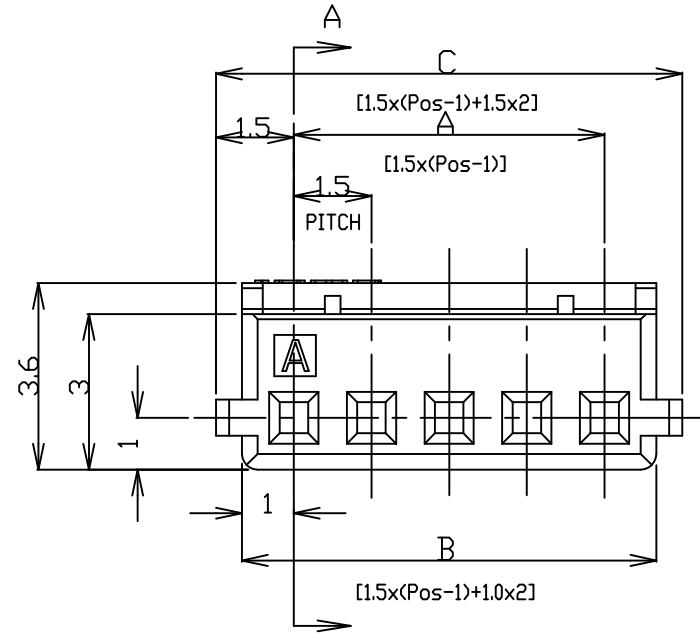
DWN

APVD

SEE SHEET 1



SECTION A-A

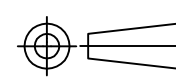


0.30	31.5	30.5	28.5	20	4-353908-0
0.29	30.0	29.0	27.0	19	3-353908-9
0.27	28.5	27.5	25.5	18	3-353908-8
0.26	27.0	26.0	24.0	17	3-353908-7
0.24	25.5	24.5	22.5	16	3-353908-6
0.23	24.0	23.0	21.0	15	3-353908-5
0.21	22.5	21.5	19.5	14	3-353908-4
0.20	21.0	20.0	18.0	13	3-353908-3
0.19	19.5	18.5	16.5	12	3-353908-2
0.17	18.0	17.0	15.0	11	3-353908-1
0.16	16.5	15.5	13.5	10	3-353908-0
0.14	15.0	14.0	12.0	9	2-353908-9
0.13	13.5	12.5	10.5	8	2-353908-8
0.13	12.0	11.0	9.0	7	2-353908-7
0.10	10.5	9.5	7.5	6	2-353908-6
0.09	9.0	8.0	6.0	5	2-353908-5
0.07	7.5	6.5	4.5	4	2-353908-4
0.06	6.0	5.0	3.0	3	2-353908-3
0.04	4.5	3.5	1.5	2	2-353908-2
WEIGHT (g)	C	B	A	Pos	WHITE
	DIMENSIONS				P/N

- NOTES:
- 1. APPLICABLE WIRE SIZE: AWG#24~#30(0.22mm²~0.05mm²).
INSULATION DIAMETER: 0.7mm~1.03mm.
 - 2. USE WITH RECEPTACLE CONTACT P/N
AWG#24~#28: 353907-1, 353918-1(L/P)
 - 3. COMPLY WITH GLOW WIRE REQUIREMENTS FOR PARTS OF
NON-METALLIC MATERIAL SUPPORTING A CURRENT-CARRYING
CONNECTION DETAILED IN IEC 60335-1, SECTION 30(GWT).

THIS DRAWING IS A CONTROLLED DOCUMENT.

DIMENSIONS: mm



MATERIAL: 6 NYLON UL94 V-2

TOLERANCES UNLESS OTHERWISE SPECIFIED:

0 PLC	±
1 PLC	±
2 PLC	±
3 PLC	±
4 PLC	±
ANGLES	±
FINISH	-

DWN H.HOSHINO 26.APR.'97
 CHK J.TANIGAWA 26.APR.'97
 APVD S.KUBONOHI 10.MAR.'99
 PRODUCT SPEC
 108-60025
 APPLICATION SPEC
 114-5245
 WEIGHT
 CUSTOMER DRAWING



AMP MINI COMMON TERMINATED (CT)
 CONNECTOR 1.5mm PITCH
 HOUSING, CRIMP TYPE

SIZE	CAGE CODE	DRAWING NO	RESTRICTED TO
A3	00779	C=353908	-
SCALE	NON	SHEET	2 of 2
REV	D		